



THURLESTONE HOTEL

THURLESTONE VILLAGE

SOUTH DEVON COAST



TIME TO

Escape

...down winding Devon lanes

flanked by wild-flowering

hedgerows, pass thatched

cottages and the traditional

Village Inn to find Thurlestone.



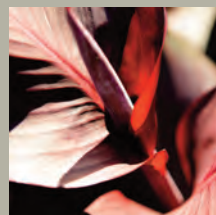


A N D

Enjoy

...panoramic views to a glittering sea, a National Trust coastline,
unspoilt beaches, semi-tropical gardens and golf course. Dip
into the outdoor heated pool or visit our stunning Voyage spa.
All this in the luxury of the Thurlestone Hotel, family-owned
and run for over 100 years. Welcome.





Wander through exquisite, thoughtfully planted gardens. Exotic flowers and unusual shrubs surround quiet secluded corners with big comfy chairs under wide parasols. Explore or take tea and enjoy the view.



Breathe
E A S Y

Relax

A LITTLE



Take a dip, top up the tan, admire the view or lunch al fresco. Take your pick in the beautiful surroundings of the outdoor pool and Rockpool Bar.





Whether you choose a Seaview Room or a Luxury Suite... think comfort, quality and attention to detail.
All rooms are beautifully designed and equipped to the highest standard. Your sanctuary.



Unwind

TOTALLY
Indulge



Choose from a menu created daily using the finest, local produce. Outstanding cuisine with a contemporary twist. A wide and expertly-considered wine cellar and the unique ambience of the Margaret Amelia Restaurant... all served with a stunning sea view. Bon Appetit!





Sunny terrace. elegant lounge, cosy snug or nautical cocktail bar. Morning coffee, light lunch, afternoon tea or pre-dinner drinks. Perhaps curl up with a book or surf the net...you'll find your spot!

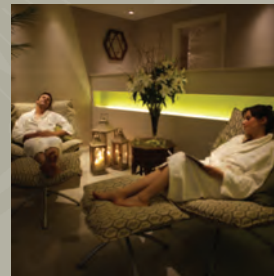
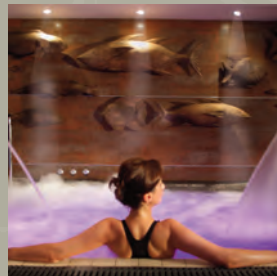
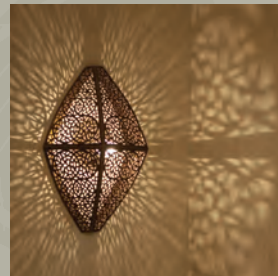


Treat
YOURSELF

THE VOYAGE SPA



Inspired by the heyday of ocean-going travel, the Spa is a haven of tranquility. Stunning pool, dry heat Laconium, jet spa Hydrotherapy pool, sauna, steam room and fitness studio. Upstairs find sanctuary in the Decl  r beauty rooms with a relaxation area overlooking the pool. Discover your own blissful journey of relaxation.



Drift AWAY

Explore



Stunning cliff walks, beautiful beaches, an ancient church, golf courses and the Village Inn... and that's just in Thurlestone! There's plenty to do and see here and in the surrounding area and at the end of your day you'll always find a warm welcome back at the Thurlestone Hotel.



DIRECTIONS

At Buckfastleigh on the A38, take the A384 into Totnes then the A381 towards Kingsbridge. After 10 miles, turn right at a mini-roundabout onto the A379 towards Churchstow. At the roundabout beyond Churchstow, turn left onto the B3197 then right into a lane signposted to Thurlestone.



THURLESTONE HOTEL

THURLESTONE VILLAGE



Thurlestone, Near Kingsbridge, South Devon TQ7 3NN Tel: 01548 560382 Fax: 01548 561069
Email: enquiries@thurlestone.co.uk Web: www.thurlestone.co.uk



INVESTOR IN PEOPLE